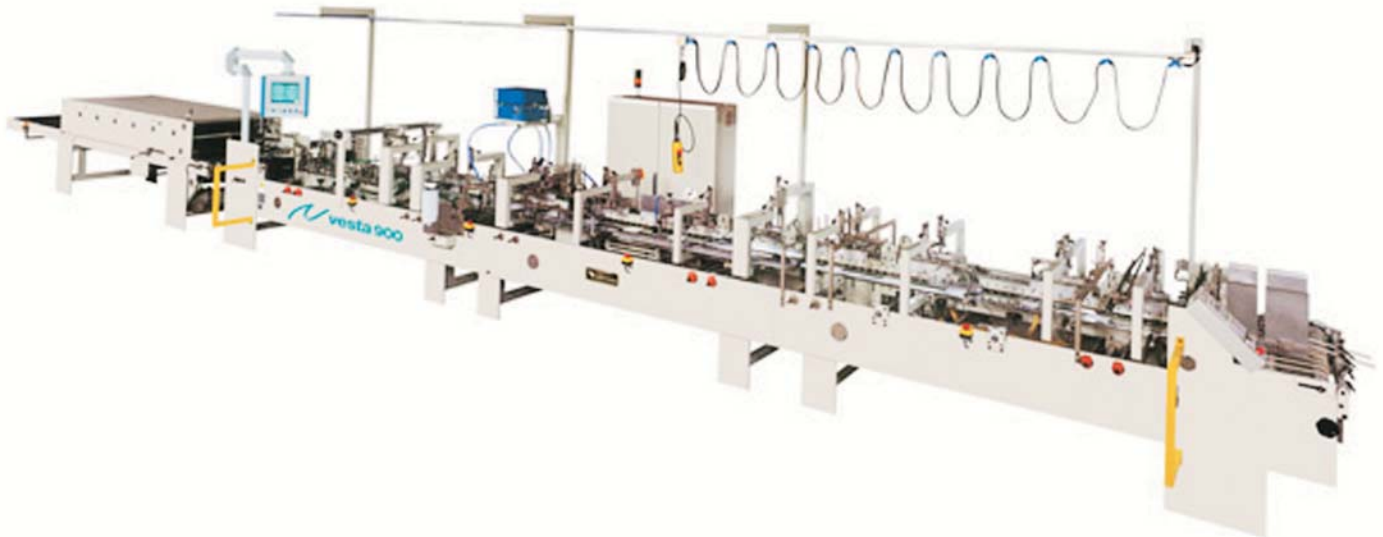


# Vesta 900 plus

folder-gluer



## MATERIALS

- Carton and board up to 600 gr/m<sup>2</sup>
- E-, F- and N-flute and B corrugatedboard
- Max. thickness of a folded box 15 mm

## BLANK SIZES (standard boxes)

- Max. width 900 mm
- Min. width (standard machine) 126 mm
- Min. width (with small box attachment) 66 mm
- Max. length 900 mm

## PRESS SECTION

- Pressure length of aprons 3.000 mm
- Aprons width 680 mm
- Max. thickness between aprons 190 mm

## DRIVE

- Inching speed 25 m/min
- Variable running speed up to 400 m/min
- Press section speed up to 0-50 m/min
- Total power required 40 kW
- Net weight, approx. 7.500 Kg
- Floor space required (with side register module and Vestafold) 2 x 16,3 m

*We reserve the right to modify specification*

## STANDARD EQUIPMENT

- Motorized feeder with independent, adjustable belts, AC speed variator and electronic pile vibrator.
- AC motors with assisted ventilation. They do not require maintenance.
- Extended prebreaking section for 1<sup>st</sup> and 3<sup>rd</sup> creases.
- Lower gluing (disc) unit in stainless steel.
- Upper carriers with "shock-absorber system".
- Folding and closing section of 2<sup>nd</sup> and 4<sup>th</sup> creases.
- Reducer gear box drive along the full machine length.
- Digital carrier position indicators.
- Adjustable crease pressing rollers.
- Transfer section with two upper and two lower adjustable telescopic ejector arms.
- 2 touch screen counters at feeder and delivery. Language selection. Controlling production, speed and spacing between cartons.
- Pneumatic kicker (air compressor required).
- Sliding overhead control unit.
- Motorized press with adjustable pressure and spacing control.

# Vesta 900 plus

folder-gluer

## SOME OPTIONS

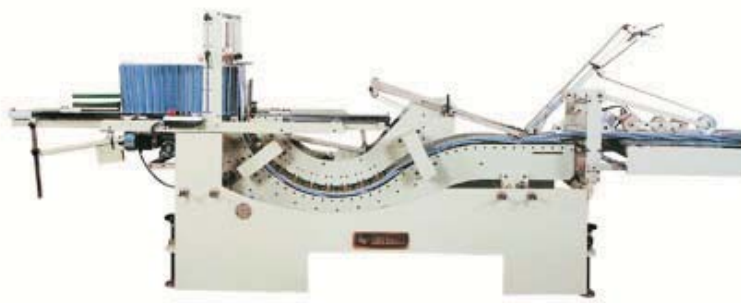
- Untimed suction feeder.
- Side register module.
- Crashlock bottom type "A" and double wall unit.
- Attachment for crashlock bottom boxes type "B".
- 3rd centre removable carrier on folding & closing section.
- **Vestafold** electronic 4-corner folding module with servo motors controlled by microprocessor.
- 6-corner accessories.
- Motorized transfer section.
- Electronic glue systems for cold glue or hotmelt.
- Glue inspection and verification system.
- Pocket folder attachment.
- Small box attachment.
- Glue flap milling device (grinder) with dust extractor.
- Bar code readers with stopping relay or carton ejector.
- Attachment for standard boxes with inner partitions.
- Pneumatic press.
- **Vestapack** carton collector module.



*Suction feeder (option)*



*Side register module (option)*



*Vestapack carton collector (option)*



*Pneumatic press (option)*



*Vestafold 4-corner folding module (option)*

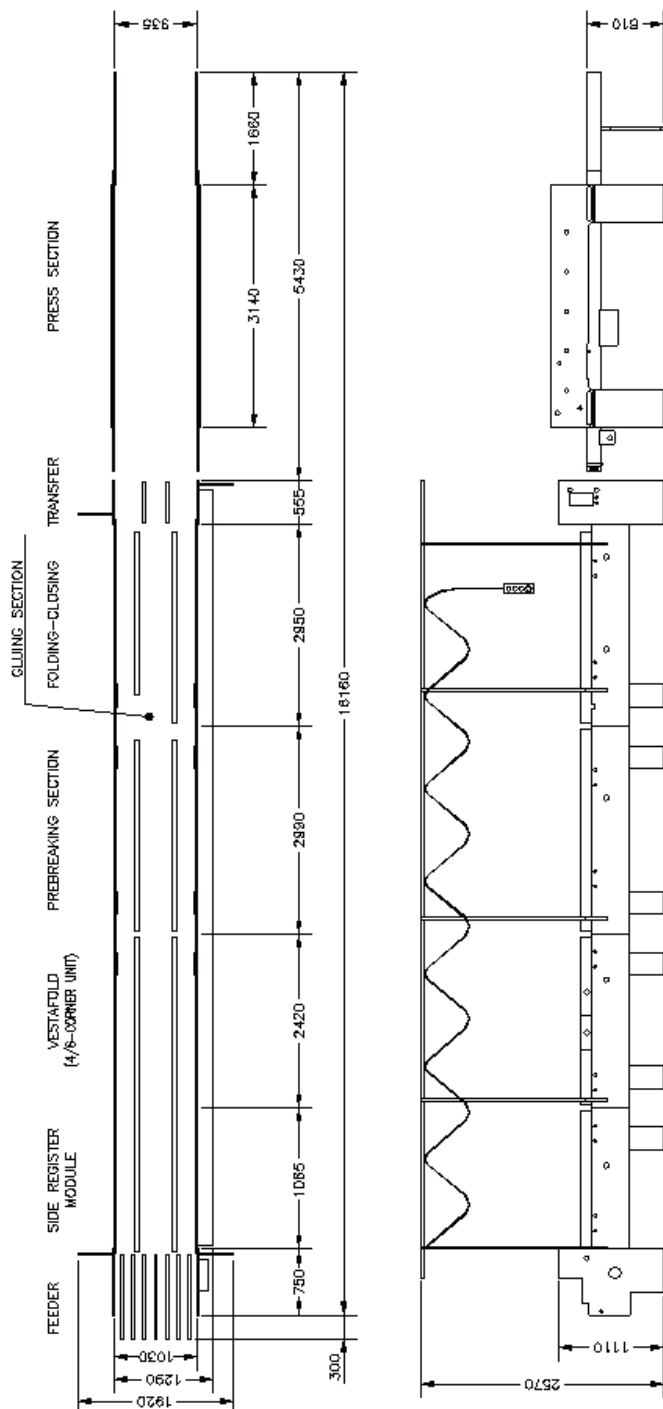


*Lower glue (disc) unit*

# Vesta 900 plus

folder-gluer

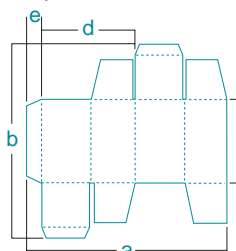
## OUTLINE



## APPLICATIONS

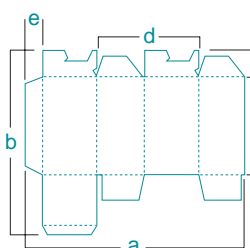
\*With special attachment for CD and small box

### Cajas standard



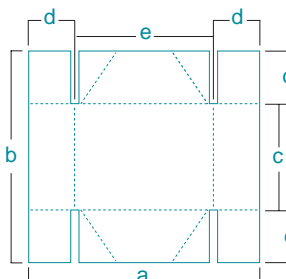
- a 126–900
- a\* 66–900
- b máx. 900
- c mín. 60
- d\* mín. 30
- e mín. 6

### Cajas de fondo automático



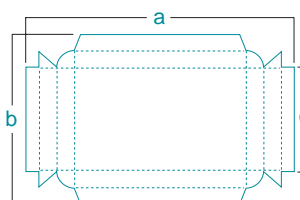
- a máx. 900
- b máx. 900
- c mín. 60
- d mín. 90
- e mín. 6
- f mín. 30
- f máx. 150

### Cajas de 4 puntos



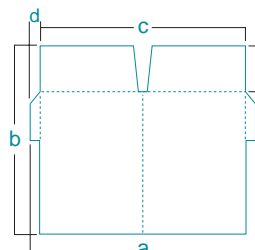
- a 150–900
- b 150–900
- c mín. 100
- d 25–150
- e mín. 100

### Cajas de doble pared



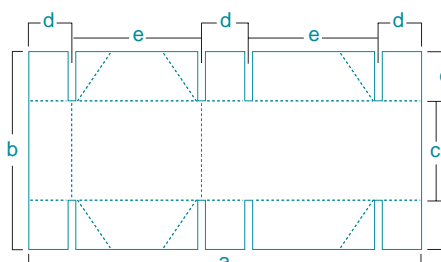
- a máx. 900
- b máx. 900
- c mín. 60

### Carpetas con bolsas interiores



- a mín. 220
- b máx. 800
- c\* mín. 100
- d mín. 10
- e máx. 300

### Cajas de 6 puntos



- a 275–900
- b 275–900
- c mín. 100
- d 25–150
- e mín. 100

[www.inramik.com](http://www.inramik.com)